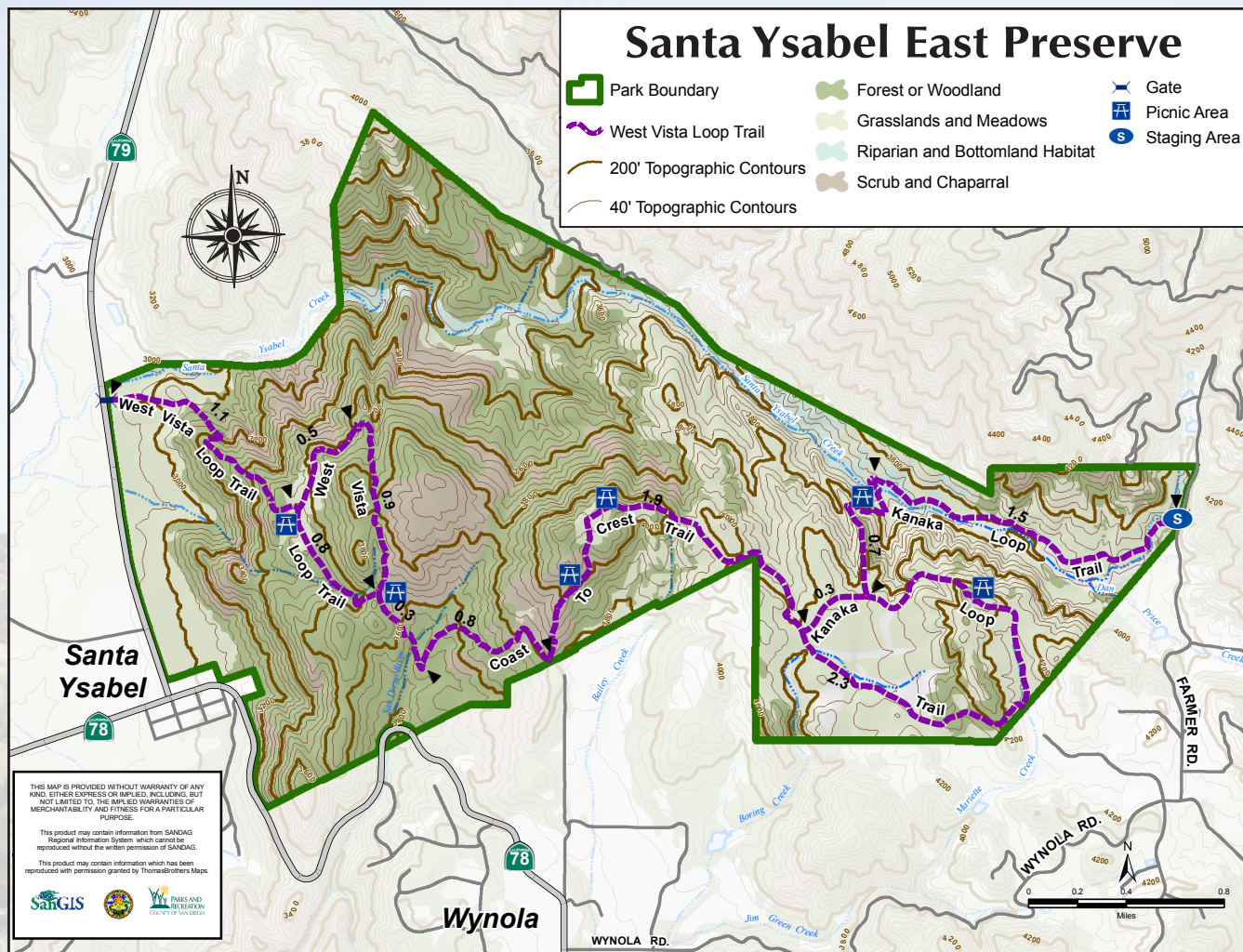


SANTA YSABEL EAST PRESERVE

500 Farmer Road
Julian, CA 92036
22550 Highway 79
Santa Ysabel, CA 92070
760-765-4098



Park Hours: 8 a.m. to sunset

Oak woodlands, native grasslands and fields of wildflowers are some of the settings you'll experience during your hiking, biking and riding adventures within the boundaries of this 3,800 acre preserve.

More than 13 miles of multi-use trails wind through various habitats in this scenic mountain preserve.

Fires or overnight camping are not allowed.

For your safety, stay on the trails, the natural resources of the preserve are fragile and depend on your trail etiquette for survival.

Please stay out of the creek and closed areas of the preserve.

To prevent damage to the trails, after inclement weather (1/2-inch of rain or any snow), the preserve will be closed until the trails dry out.

Be sure to carry plenty of water, as Santa Ysabel can be hot and dry during the summer and there is no water available on the trails.

No fees are collected for day use at the Preserve.

Dogs are permitted provided they are on a leash.

